



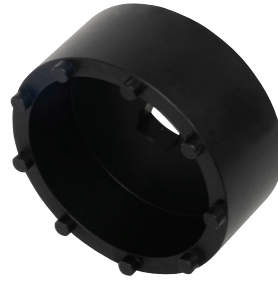
NEW TOOLS

31510 AXLE NUT SOCKET, 9 PIN FOR GM

Used to Remove and Install the Hub Nut on 2020, 2021, and some 2022, Silverado and Sierra 2500/3500 Trucks With 11.5" and 12" Dual Rear Wheel Axle Hubs.

May work on other vehicles with 2.97" O.D. Axle nut. Full-floating hubs are held on with a circular nut that is engaged by the 9 pin socket for removal and installation. The 1/2" drive socket is hardened for durability with a black oxide finish.

31510 Axle Nut Socket, 9 pin. Box. Shipping wt. 1 lb. 5 oz



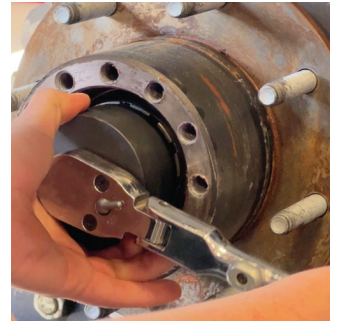
YouTube

31520 AXLE NUT SOCKET, 12 PIN FOR DODGE

Used to Remove and Install the Hub Bearing Retaining Nut On 2019 and Newer Ram 3500, 4500 and 5500 Heavy Duty Trucks with 12" Axles.

May work on other vehicles with 3.125" O.D. Axle nut. The circular nut is engaged by the 12 pin socket for removal and installation. The 1/2" drive socket is hardened for durability with a black oxide finish.

31520 Axle Nut Socket, 12 pin. Box. Shipping wt. 2 lb. 3 oz.



YouTube

41840 SLACK ADJUSTER ROD PIN PRESS

Spring-Loaded Plunger Automatically Centers the Press on the Slack Adjuster Rod Clevis Pin, For Easy Removal.

Tool is designed to shear off the cotter pin, or the cotter pin can be ground off. Works on most models of automatic slack adjuster rod pins found on class 6-8 trucks and equipment.

41840 Slack Adjusted Rod Pin Press, 5/16" & 3/8" Box. Shipping wt. 1 lb. 2 oz.



YouTube

41850 BRAKE CLEVIS PIN PRESS

Spring-Loaded Plunger Automatically Centers the Press on the Brake Clevis Pin, for Easy Removal.

Tool is designed to shear off the cotter pin, or the cotter pin can be ground off. Works on most models of automatic slack adjuster rod pins found on class 6-8 trucks and equipment.

41850 Brake Clevis Pin Press. Box. Shipping wt. 3 lb. 12 oz.



YouTube

89080 CREEPER AIR FRESHENER

Great for Use Anywhere that Needs a Little Freshening Up.

Made with premium essential oils for a long lasting Ocean Breeze scent.

89080 Creeper Air Freshener. Hang card. Shipping wt. 1 oz.

